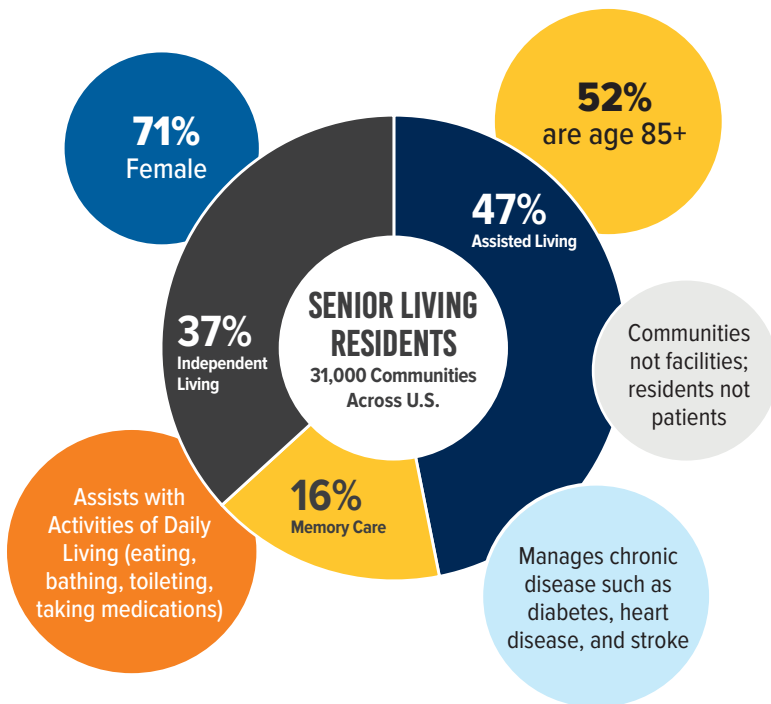


THE VALUE OF ASSISTED LIVING

WHAT IS ASSISTED LIVING?

Assisted living is a cost-effective long-term care (LTC) model, providing 24-hour care. Residents live in individual apartment homes and share caregivers.



ASSISTED LIVING IS THE MOST AFFORDABLE CHOICE OF SENIOR CARE



* A home health aide costs an average of \$6,292 for 44-hours per week of care; for comparable 24/7 care, a home health aide costs an average of \$24,024. Neither of these amounts include the cost of housing or meals.



RHODE ISLAND

RHODE ISLAND ASSISTED LIVING

Rhode Island Seniors Served	5,701
Residential Communities	60
Caregivers & Other Employees	5,000
Workers Needed by 2040	15,300
Economic Impact	\$742.6 Million

WHY ASSISTED LIVING MATTERS



1 HIGH SENIOR SATISFACTION

- Over 90% of residents report high satisfaction
- Over 85% of families report high value
- 70% report improved health outlook
- Nearly 75% report improved quality of life
- 95% seniors feel safe

Based on a survey of 400,000 residents & families

2 SAVES STATE AND FEDERAL TAX DOLLARS

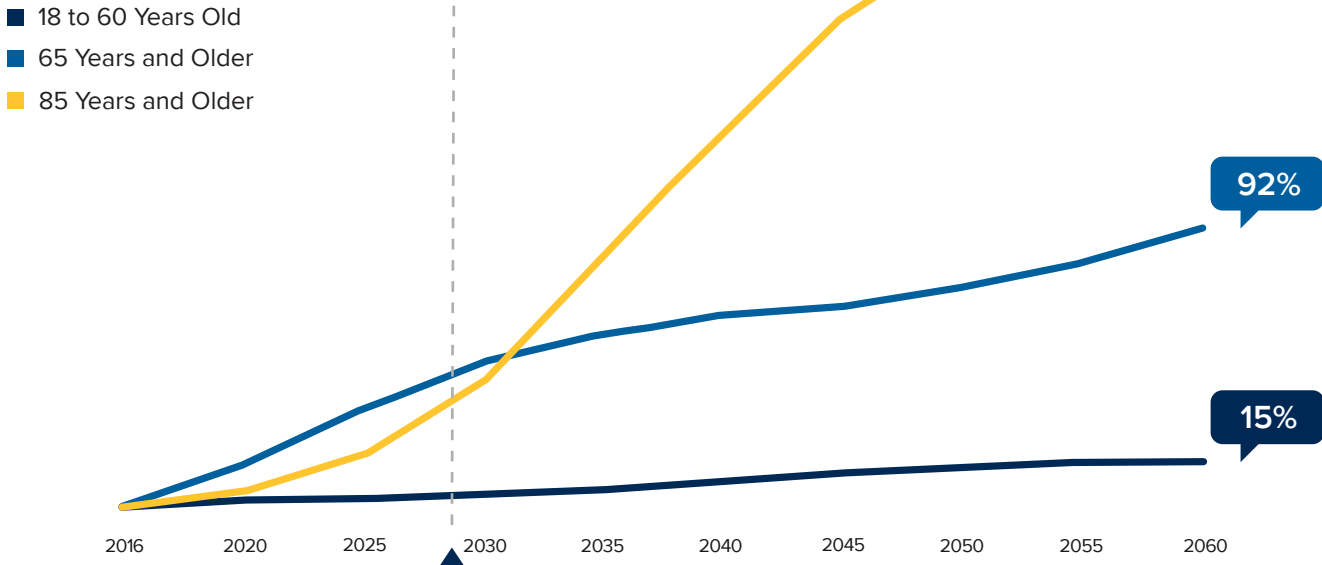
Assisted Living saves Medicaid	\$43.4 billion each year
Assisted Living saves Medicare	\$15.4 billion each year
Assisted Living reduces lost work productivity	\$43.9 billion each year
Rhode Island Medicaid savings	\$361 million each year

Report: The Value of Assisted Living for America

PREPARING FOR AMERICA'S RAPIDLY AGING POPULATION

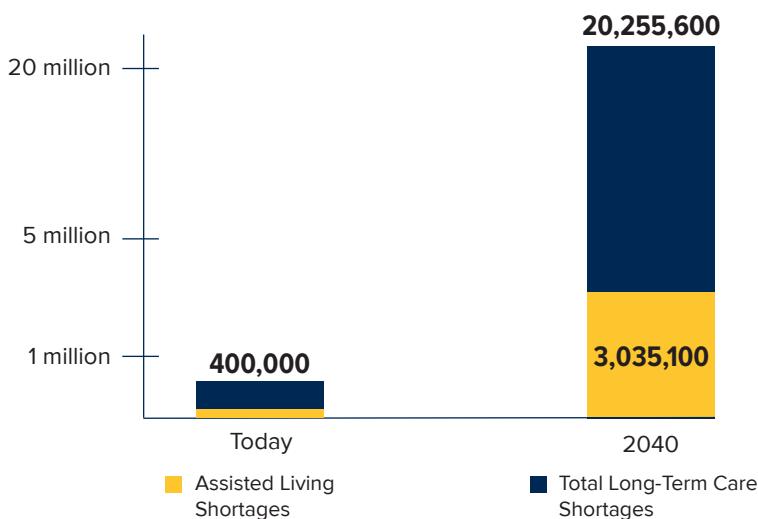
PROJECTED POPULATION GROWTH BY AGE GROUP, 2016 TO 2060

For the first time in U.S. history older adults are projected to outnumber children by 2029



LONG-TERM CARE WORKFORCE CRISIS THROUGH 2040

Severe job shortages will grow exponentially



SOLUTION

ASSISTED LIVING IS AN IMPORTANT COST-EFFECTIVE SOLUTION FOR CARING FOR SENIORS. TO KEEP IT VIABLE CONGRESS MUST:

- ▶ Increase investments in workforce development including existing federal recruitment, training, and retainment programs, and engaging foreign-born workers.
- ▶ Increase access and affordability of assisted living so more Americans can plan and meet their caregiving needs.